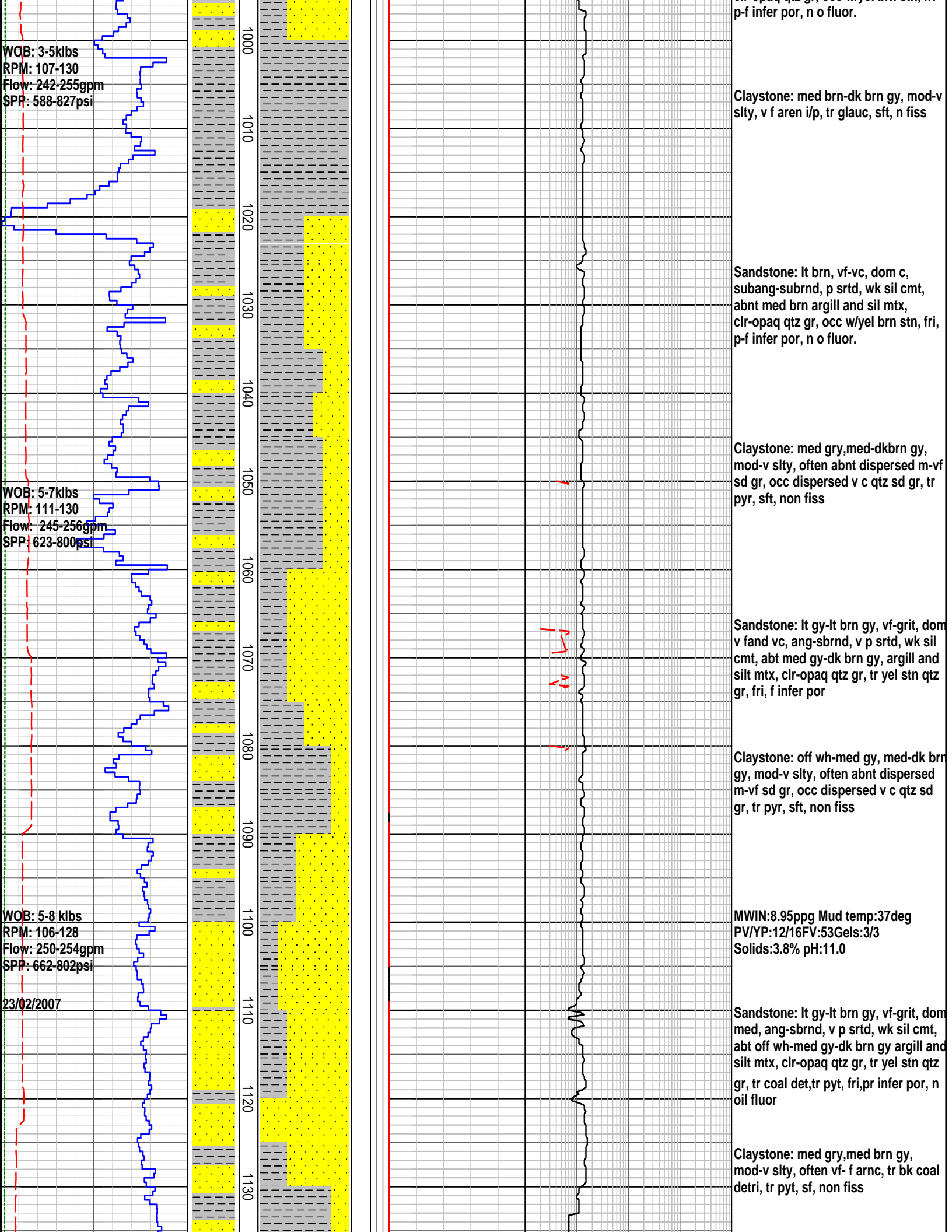
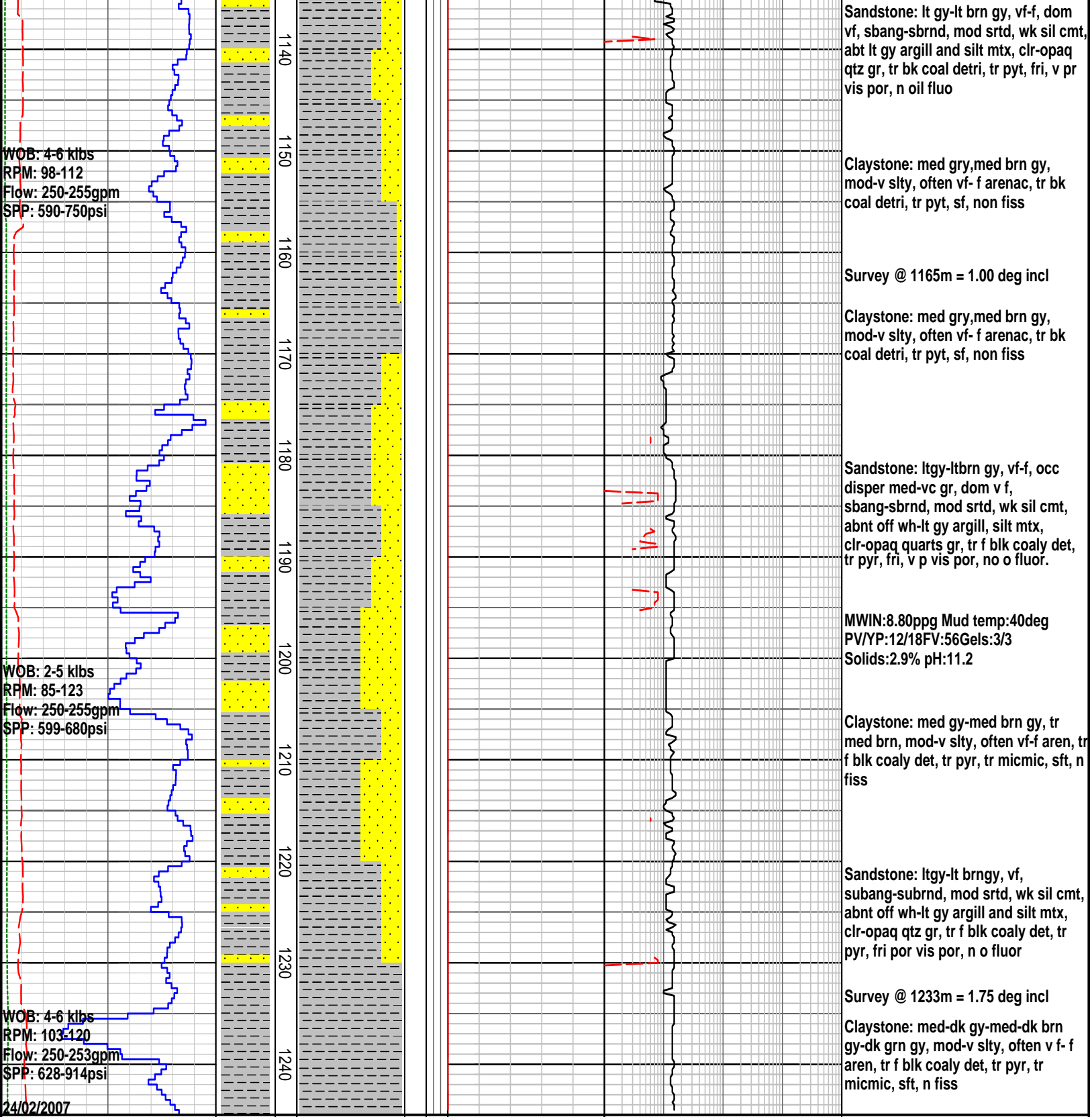


## FORMATION EVALUATION LOG

RATE OF PENETRATION		INTERPRETED LITHOLOGY	MD meters 1:500	LITHOLOGY	CORE	OIL SHOWS	TOTAL GAS	CHROMATOGRAPH		REMARKS	
ROP (0-100m/hr)								1	Methane ppm		10000
Backup ROP (100-200m/hr)								1	Ethane ppm	10000	
WOB (klb)								1	Propane ppm	10000	
TORQUE AVG								1	iso-Butane ppm	10000	
								1	n-Butane ppm	10000	
								1	iso-Pentane ppm	10000	
									n-Pentane ppm		
									10   100   1000   10000		
WOB: 2-4klbs RPM: 105-110 Flow: 198-229gpm SPP: 569-1064psi  22/02/2007  CB #1 MCP 662 6.75" TFA 0.5522 Depth in 915 , out: 919 m 4.0m/1.2 hrs  2RR1 6-3/4" M56S PDC Jets: 5 x 12, In: 919m, Out: 1245m Drilled:326m In 12.8hrs Bit Grade: 1-2, NO-A-X-I-NO-CP			90								Claystone: med-dk brn-dk brn gy, often dk grn, mod - occ v slty, abnt disper vf-med qtz sd gr i/p, comm-abnt glauc, com marcasite, mod disp, sft n fiss
			910								Core#1 Cut 915-918.5m Recovery 2.03m=58%
			920								Core Description Claystone; dk brn gy,v slty, v f aren w/ang-subang clr opaque qtz gr, tr f brn & clr mic flks, comm diss marcasite, sft, n fiss
			930								MWIN:8.65ppg Mud temp:32deg PV/YP:9/11FV:48Gels:2/2 Solids:1.7% pH:10.8
			940								Sandstone: lt brn, vf-vc, dom med-c, subang-subrnd, p srted, wk sil cmt, abnt med brn argill and sil mtx, clr-opaq qtz gr, occ w/yel brn stn, fri, p-f infer por, n o fluor.
			950								
WOB: 4-6klbs RPM: 98-115 Flow: 144-247gpm SPP: 452-859psi			960								Claystone: med brn-dk brn gy, mod-v slty, v f aren i/p, tr glauc, sft, n fiss
			970								
			980								Sandstone: med or brn, vf-gran, dom c, subang-sbrnd, v p srted, wk sil cmt, abt med brn argill and silt mtx, qtz w/yel brn stn on qtz gr, rr iron ox pell, fri, f-g infer por, n fluo
			990								Claystone: dk brn gy, mod-v slty, abnt dispers vf - c qtz sd gr, sft, non fiss
											Sandstone: lt brn, vf-vc, dom med-c, subang-subrnd, p srted, wk sil cmt, abnt med brn argill and sil mtx, clr-opaq qtz ar. occ w/yel brn stn. fri





### FORMATION EVALUATION LOG

RATE OF PENETRATION												INTERPRETED LITHOLOGY	MID meters 1:500	LITHOLOGY	CORE	OIL SHOWS	TOTAL GAS	CHROMATOGRAPH			REMARKS
ROP (0-100m/hr)											1							Methane ppm		10000	
Backup ROP (100-200m/hr)											1							Ethane ppm		10000	
WOB (klb)											1							Propane ppm		10000	
TORQUE AVG											1							iso-Butane ppm		10000	
											1							n-Butane ppm		10000	
											1							iso-Pentane ppm		10000	
											1							n-Pentane ppm			
100	90	80	70	60	50	40	30	20	10												
200	190	180	170	160	150	140	130	120	110												
5	10	15	20	25	30	35	40	45	50												
5	10	15	20	25	30	35	40	45	50												

